



2023 - 2024
Product Catalog
Specialty Crops



Simply Vital.



Table of Contents

About	2
Biologicals	4
Superior Strains	6
Products	8
Data	14

Locus AG

Nice to have or vital?

Growers work through numerous “need vs. want” scenarios when it comes to selecting products that impact performance and productivity.

Ad after ad recommends one product over others, but many fall short in delivering the “why”. They lack the proof to show it actually works. At Locus AG, we’re proud to say we do things differently. That means when we say, “Locus AG biologicals aren’t just nice-to-haves, they’re *Simply Vital* to farming success,” we have the data to back it up.

So, that’s what we’re doing. Throughout this catalog, you’ll get the facts on why farmers should add Locus AG biologicals to their input strategy. You’ll learn how our products work. We’ll break down why our strains are superior to others on the market. And we’ll show the tangible results Locus AG customers can expect.

Because at the end of the day, Locus AG understands that delivering the components that farmers need to maximize yields and profits is the key to creating the legacy we all want to leave – more productive, sustainable crops for the future.

Biologicals

About Us

Our VITAL inputs help growers succeed

Farmers and agribusinesses today are struck with a multitude of decisions and challenges—which biological input they use doesn't have to be one of them.

Locus AG biological products are developed by an experienced team of microbiologists and agronomists. The crop-specific formulations include a selection of highly specific, superior microbial strains chosen to support some of the most common challenges farmers face.

For farmers who want to get more out of their fertilizer? Our products can help make other inputs more impactful. For those who want to increase yield? Our products are proven by third-party data to do just that. For farmers who want to impact soil quality? Nutrient uptake? Plant vigor? Profitability? Locus AG biologicals are formulated to enhance each of these, too.

So, why should farmers choose Locus AG products over others on the market? Because Locus AG biologicals are *Simply Vital* to farming success.

Locus AG at-a-glance:

- ✓ Agricultural biological company
- ✓ Superior crop-specific biological line of products for row crops, specialty crops, and turf/ornamental markets
- ✓ Library of proprietary, naturally occurring, non-GMO strains
- ✓ 100% of products manufactured and shipped out of U.S.-based facility (Solon, Ohio)



Transforming Agriculture with Strong Backing

Locus AG is a division of Locus Fermentation Solutions (Locus FS). Together, we're on a mission to transform the world using 100% bio-based ingredients that enhance profitability and sustainability. As one division of a green tech powerhouse, Locus AG has streamlined access to Locus FS' globally recognized scientists and top-notch financial support. We tap into the vast biological knowledge base and proprietary fermentation expertise to ensure high-impact solutions for our growers.

Locus FS Highlights

- ✓ 1400+ patent filings
- ✓ 100+ employees
- ✓ 9 offices across 3 states
- ✓ 100% bio-based solutions tailored for agriculture, livestock, oil & gas, mining, CPG products and industrial applications

Biologicals

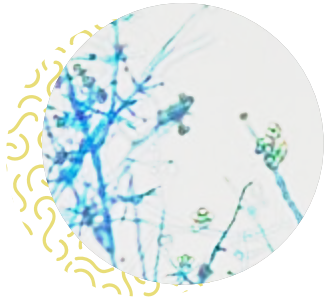
The future of more productive, sustainable specialty crops

Locus AG specialty crop products lead farmers to greater ROI by introducing vital, beneficial biologicals that drive higher yields.

But we don't just throw everything at it, hoping something will work. To us, strain specificity matters. Our scientists have learned through numerous field trials and rigorous testing that a handful of strong symbiotic strains will outperform many weak, ineffective or competing strains. The result? Simple yet vital formulations. We only choose 1-5 strains that are scientifically proven to work well together and are specifically formulated for targeted, proven outcomes.

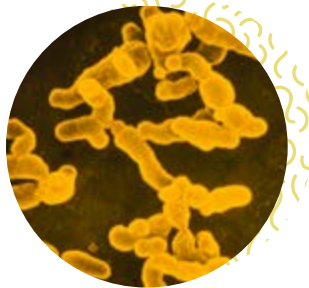
Proven Outcomes

- ✓ Increased yields & ROI
- ✓ Improved nutrient availability
- ✓ Expanded root growth
- ✓ Enhanced soil quality



Trichoderma

A beneficial endophytic fungus that resides within the plant. *Trichoderma* releases metabolites, which increases nutrient uptake and use. The result is vigorous root growth, development and crop productivity.



Rhizobia

A nitrogen-fixing bacteria, which forms a symbiotic relationship with the plant. *Rhizobia* enter the roots and form nodules, which aids in nitrogen fixation and helps legume crops maximize their yield potential.



Bacillus

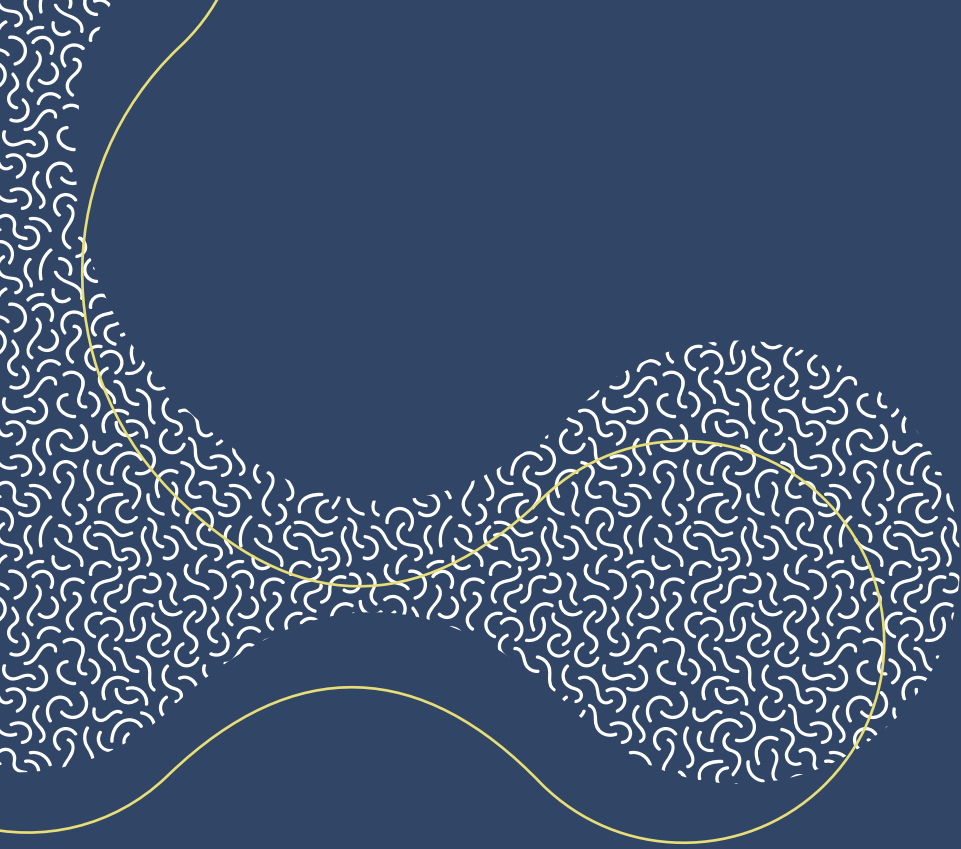
A specially selected *Bacillus sp.* that is a beneficial endophytic bacteria. This strain produces metabolites and aids in breaking down and moving nutrients. Improved nutrient use efficiency results in enhanced plant vigor and crop yield.



Wickerhamomyces

A free-living, soil-dwelling beneficial yeast that secretes metabolites, breaking down and converting insoluble phosphates into usable phosphorus. The result is increased nutrient use efficiency and rapid root expansion.





Not all biologicals are created equal

You'll find our strain research and selections to be proven and unmatched in the industry. Here's why farmers can feel confident using Locus AG biologicals.

S

T

R

A



Superior Development

DESIGNED APPROACH

Crop-beneficial formulations

CURATED STRAINS

Only 1-5 organisms in each of our products

REDUCES WASTE

Products have high-concentration, low-use rates



Superior Usability

EASY TO USE

AND IMPLEMENT

Liquid and dry (wetable powder) formulations applied through existing irrigation system

FERTILIZER FRIENDLY

Works with and enhances most fertilizers



Superior Modes of Action

ENDOPHYTIC

Travels into the plant to help cells get nutrients where they are needed most

SOIL DWELLING

Helps plants tap into nutrients in the ground for stronger roots and increased uptake



Superior Performance

PROVEN RESULTS

Consistently performs well in different soil types

3RD PARTY TRIALS

Committed to coast-to-coast trialing and keeping Locus AG independent

IMMEDIATE IMPACT

Impact on plants starts at application





Simply Vital Biologicals

Drive higher yields with Locus AG beneficial biologicals

Locus AG products are easy to use,
have a high concentration, low use rate,
and deliver consistent results in
different soil types.

Superior biological products with proven outcomes



 **Rhizolizer®**

Boosts yields by creating a strong root system and increasing nutrient uptake in the plant. Includes Rhizolizer® Duo WP and Rhizolizer® Duo Organic Liquid.



 **Pantego®**

Increases the availability of phosphorous and supports extensive root growth, which leads to increased nutrient and water uptake. Includes Pantego® Liquid.



TERRADIGM®

Increases nutrient uptake and availability of phosphorus. Boosts tensile strength, chlorophyll, and root mass. Includes Terradigm® and Terradigm® XP.



 **Unpac™**

Naturally derived glycolipid that helps water enter the soil micropores more freely to break up soil compaction.

Rhizolizer[®] boosts nutrient uptake

Supercharge productivity with our *Simply Vital* biologicals.

Adding Rhizolizer[®] to farming practices is not only a smart choice, it's vital for increasing yields. The superior, strategically selected microbial strains found in the Rhizolizer[®] product line boost specialty crop yields by unlocking unused inputs and other soil nutrients, creating a stronger root system, increasing nutrient uptake, and enhancing plant vigor. Because the strains are endophytic, they create a symbiotic relationship with the plant for long-lasting benefits.

Formulated for These Specialty Crops

Berries & Melons, Fruits & Vegetables, Vineyard & Orchards

Featured Proprietary Strains

Trichoderma harzianum, *Trichoderma virens*, *Bacillus amyloliquefaciens*

How Rhizolizer[®] Works

Expands Root Growth

Increases root mass, which allows for deeper penetration and increased nutrient uptake.

Nutrient Uptake

Enhances nutrient solubilization, and unlocks unused inputs and other soil nutrients.

Increases Yields

Boosts yield per acre, which leads to more revenue generated.



Available in *Wettable Powder (WP) and Liquid Formulations*

Pantego® activates root growth

Unlock nutrients with our *Simply Vital* biologicals.

Pantego® features the industry's only free-living yeast soil amendment. This phosphate-solubilizing yeast not only increases the availability of phosphorus but also supports extensive root growth to unlock and transport nutrients and water to the plant tissue.

Pantego® is often paired with the Rhizolizer® product line for an integrated program.

Formulated for These Specialty Crops

Berries & Melons, Fruits & Vegetables, Vineyard & Orchards

Featured Proprietary Strains

Wickerhamomyces anomalus

How Pantego® Works

Improves Soil Activity

Microbial strains increase activity in the root zone around the plant.

Solubilizes Phosphate

Improves plant-available phosphorus, which increases nutrient use efficiency.

Boosts Yields

Increases more bushels per acre, which leads to more revenue generated.



Available in Liquid Formulation



Unpac[®] treats soil compaction

Penetrate compact soils with our *Simply Vital* biological.

Compacted soils lead to poor root growth, decreased nutrient uptake, excessive water runoff and lower yields. Our proprietary glycolipids reduce the surface tension of water and naturally break up soil compaction. They can be applied to existing irrigation systems, which makes it easy to implement and reap the rewards.

Featured Proprietary Formulation

Microbially derived Glycolipids



Available in Liquid Formulation

How Unpac[®] Works

Penetrates Compact Soils

Distributes water more freely into soil micropores, beneficial for all soil types.

Promotes Root Growth

Allows roots to penetrate soil, which leads improved uptake of inputs.

Increases Yields

Less compacted soils and enhanced root growth drives improved crop productivity.

Terradigm® enhances turf quality & color

Boost nutrient uptake with our *Simply Vital* biologicals.

Turf treated with Locus AG's Terradigm® product line will experience enhanced quality and color. On golf courses, turf will heal faster from divot and play recovery, verticutting and aerification. Treated sod and ornamentals will mature faster, have better vigor and enhanced root growth.

Terradigm® can be used for initial install, seeding on bare soil, sprigging and grow back after harvest.

Featured Proprietary Strains

Trichoderma harzianum, *Bacillus amyloliquefaciens* (Terradigm)
Wickerhamomyces anomalus (Terradigm XP)



Available in Liquid Formulation

How Terradigm® Works

Boosts Root Growth & Tensile Strength

Increases plant vigor by elongating roots and increasing their water-holding capacity.

Enhances Nutrient Availability & Uptake

Tissue tests prove increased availability of nitrogen, phosphorus and potassium.

Consistent Clipping Weight

Boosts root mass and overall appearance without requiring increased mowing.





It's the Data that Matters

**It's not what we say
that matters. It's what
the data proves.**

That's why we partner with contract research organizations (CROs) across the country to facilitate third-party, randomized and replicated trials to prove the yield-boosting power of our biologicals.

Apple



Grape





Pepper



Snap Bean

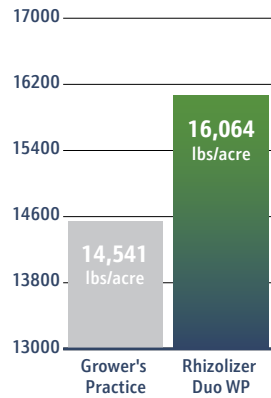


Strawberry

Yield Average

Yield Increase

Trial Information



↑1.5K
LBS/ACRE

CRO NAME

Pacific Ag Research

CRO LOCATION

Santa Maria, CA

PRODUCTS USED

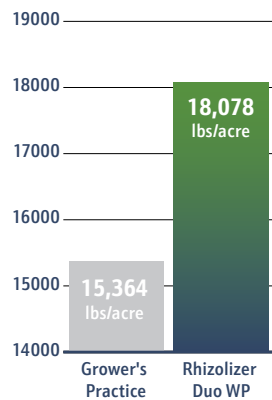
Rhizolizer Duo WP
for Berries and Melons

Sweet Potato

Yield Average

Yield Increase

Trial Information



↑2.7K
LBS/ACRE

CRO NAME

Tidewater

CRO LOCATION

Belvidere, NC

PRODUCTS USED

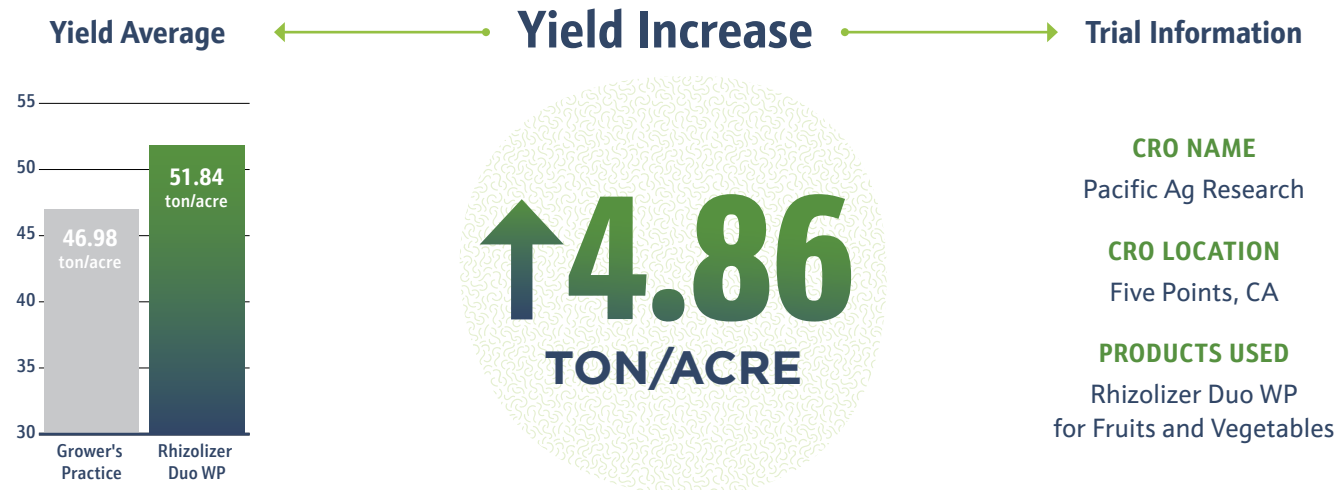
Rhizolizer Duo WP
for Fruits and Vegetables



Tomato (Fresh Market)



Tomato (Processing)

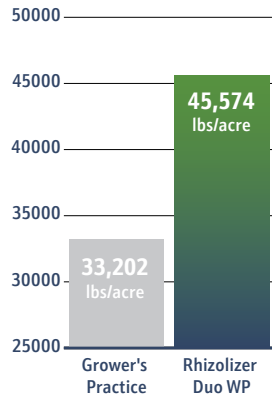


Watermelon

Yield Average

Yield Increase

Trial Information



↑12.3K
LBS/ACRE

CRO NAME

Florida Ag Research

CRO LOCATION

Thonotosassa, FL

PRODUCTS USED

Rhizolizer Duo WP
for Berries and Melons





**A simply vital choice.
Get started now.**

LocusAG.com
info@LocusAG.com

© 2023 Locus Agriculture. All rights reserved.